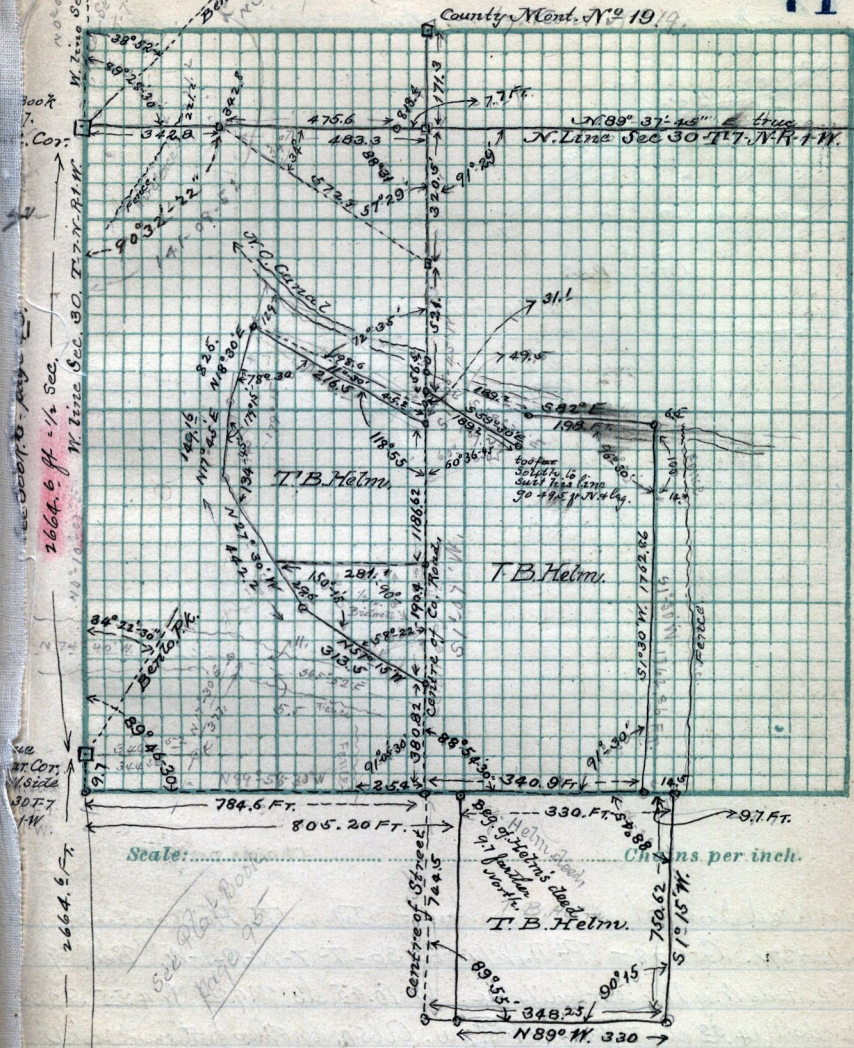


MARCH - 25 - 1890.

71



Scale: ..... Chains per inch.

Survey made for T.B. Helm at Pleasant View

March 25-26-27-1891, - 2 1/4 days

John Hayman, John Baird

Chairmen

State taps.

Self. transit.

see description on page 66.

W. Cor. Sec. 30  
T. 7. N. - R. 1. W.

See 92 & 93  
Page 95